



## LED-Settings: Lighting optimisation

Version 1.01 – January 2021

### Table of contents

Preparation .....	2
Settings.....	2
Positioning the LED lights correctly:.....	2
Adjusting the light heat and light intensity:.....	2

## Preparation

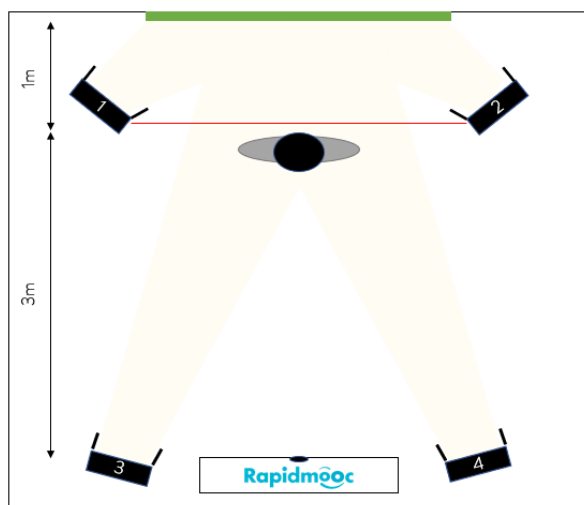
1. Assemble the green screen. The Green Screen is easy to unfold and clip onto the magnetic carrying handle that is attached to the top of the tripod.
2. Assemble the 4 LED lights. One tripod is also included with each one of the LED lights.

## Settings

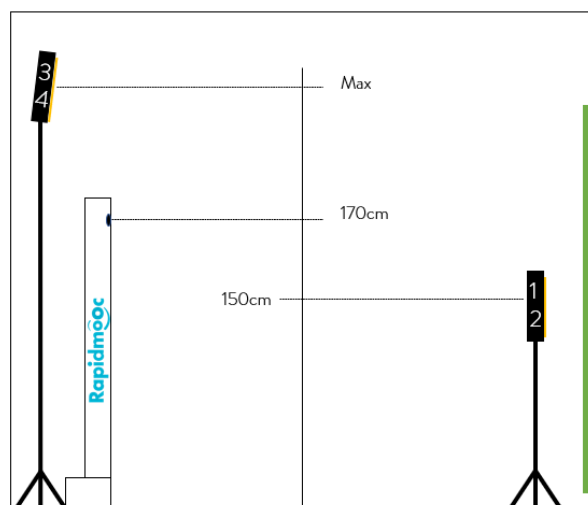
### Positioning the LED lights correctly:

1. Set up 2 of the LED lights next to the Rapidmooc: one light on the right and one light on the left of the video machine. Point the lights in the direction of the speaker.
  - The tripods of these 2 LED lights should be set as high as possible so that they shine slightly on the speaker from above. This is especially important if the speaker is wearing glasses to avoid possible mirror effects in the video.
2. Set up the other 2 LED lights relatively close in front of the Green Screen: one light to the right and one light to the left of the Green Screen.
  - In contrast to the first two lights, here the tripods should be set at about chest height and shine on the sides of the green screen at mid-height. That way, the green screen is evenly illuminated, and any shadows cast by the speaker do not come into play.
  - Set up the tripods so that two of the two feet are facing each other in front of the green screen. Between these two lights there is now a so-called "lighting line" (see red marking in the top view). The speaker should always be in front of this line to avoid overexposure in the video. You can also mark this line with tape on the floor of your Rapidmooc room to give the users a better orientation.

### Top view:



### Side view:



### Adjusting the light heat and light intensity:

For each LED light, you can adjust both the light warmth (in Kelvin) and the light intensity (in %) on the back.

### **1. Light warmth:**

- We recommend a reference value of approx. 5600K on all 4 LED lights.

### **2. Light intensity**

- We recommend a reference value of 80-90% on the 2 LED lights next to the studio.
- We recommend a reference value of 40-50% on the 2 LED lights next to the green screen.

These guideline values can of course vary depending on the ceiling light situation or other external conditions. In addition to the green screen settings (see "HowTo - Green screen settings"), the light settings can contribute significantly to improving the immersion quality.